



*jordan fishwick*

**MANCHESTER**  
Brailsford Road



**Brailsford Road,  
Manchester, M14 6QA**

**£1,495 Per Calendar Month**



### The Property

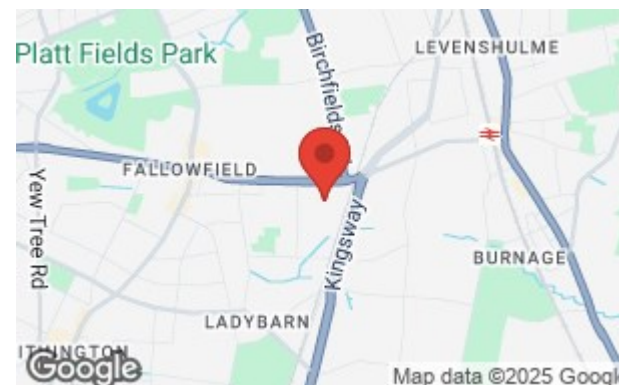
\*\*\* AVAILABLE JULY 2026 \*\*\* £115.00 PPPW \*\*\* STUDENT PROPERTY \*\*\*  
HALF RENT JULY \*\*\* BILLS PACKAGE AVAILABLE \*\*\* A well presented three double bedroom terrace house perfectly suited for professional sharers or students. The property is ideally located within walking distance of all local amenities and transport links to the City Centre. In brief, the property compromises; entrance hall, front double bedroom, generous lounge with open plan fitted kitchen, attached outhouse (great for bike storage) and a gravelled well maintained yard to the rear. To the first floor are a further two double bedrooms and a modern bathroom. Fully Furnished. Contact our Didsbury office to arrange a viewing

View our Virtual Tour Here - <https://youtu.be/Z-WgWNfnopw>

EPC Rating - D // Council Tax Band B

### Directions

**M14 6QA**





- Available July 2026
- £115.00 PPPW
- Three Double Bedrooms
- Modern Bathroom
- Outhouse for Bike Storage
- Bills Package Available
- Fully Furnished
- Great Location
- Council Tax Band B
- EPC Rating D

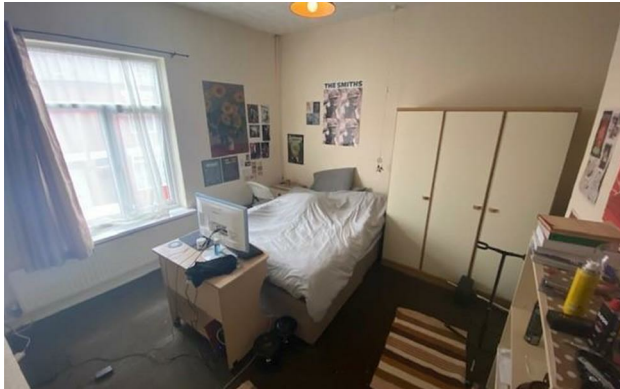
Postcode - M14 6QA

EPC Rating - D

Floor Area - sq ft

Local Authority - Manchester

Council Tax - B





These particulars are believed to be accurate but they are not guaranteed and do not form a contract. Neither Jordan Fishwick nor the vendor or lessor accept any responsibility in respect of these particulars, which are not intended to be statements or representations of fact and any intending purchaser or lessee must satisfy himself by inspection or otherwise as to the correctness of each of the statements contained in these particulars. Any floorplans on this brochure are for illustrative purposes only and are not necessarily to scale.

Offices also at: Wilmslow, Macclesfield, Hale, Sale, Chorlton, Glossop, Manchester & Salford

757-759 Wilmslow Road, Didsbury Village, Manchester

**0161 445 4480**

[didsbury@jordanfishwick.co.uk](mailto:didsbury@jordanfishwick.co.uk)  
[www.jordanfishwick.co.uk](http://www.jordanfishwick.co.uk)